

MUSWAY

MUSIC IS THE WAY



GLOBAL AUDIO
MARKETING



TECHNOLOGY FOR SOUND ENTHUSIASTS

Brand Philosophy

At MUSWAY, those who are looking for great-sounding products will find what they are looking for. MUSWAY stands for “Music is the Way” and is meant to symbolize that the company founders understand music as part of their lifestyle and culture, which ultimately led to the motto of the company.

Uncompromisingly good sound can always be seen as an ideal and it is therefore not surprising that all MUSWAY employees are passionate about music, united by the goal of creating high-quality products for demanding music reproduction in an almost simple and likeable way.



MUSWAY
MUSIC IS THE WAY

TUNEST

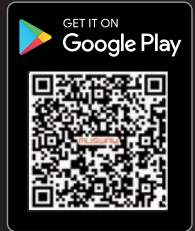


MUSWAY TUNEST

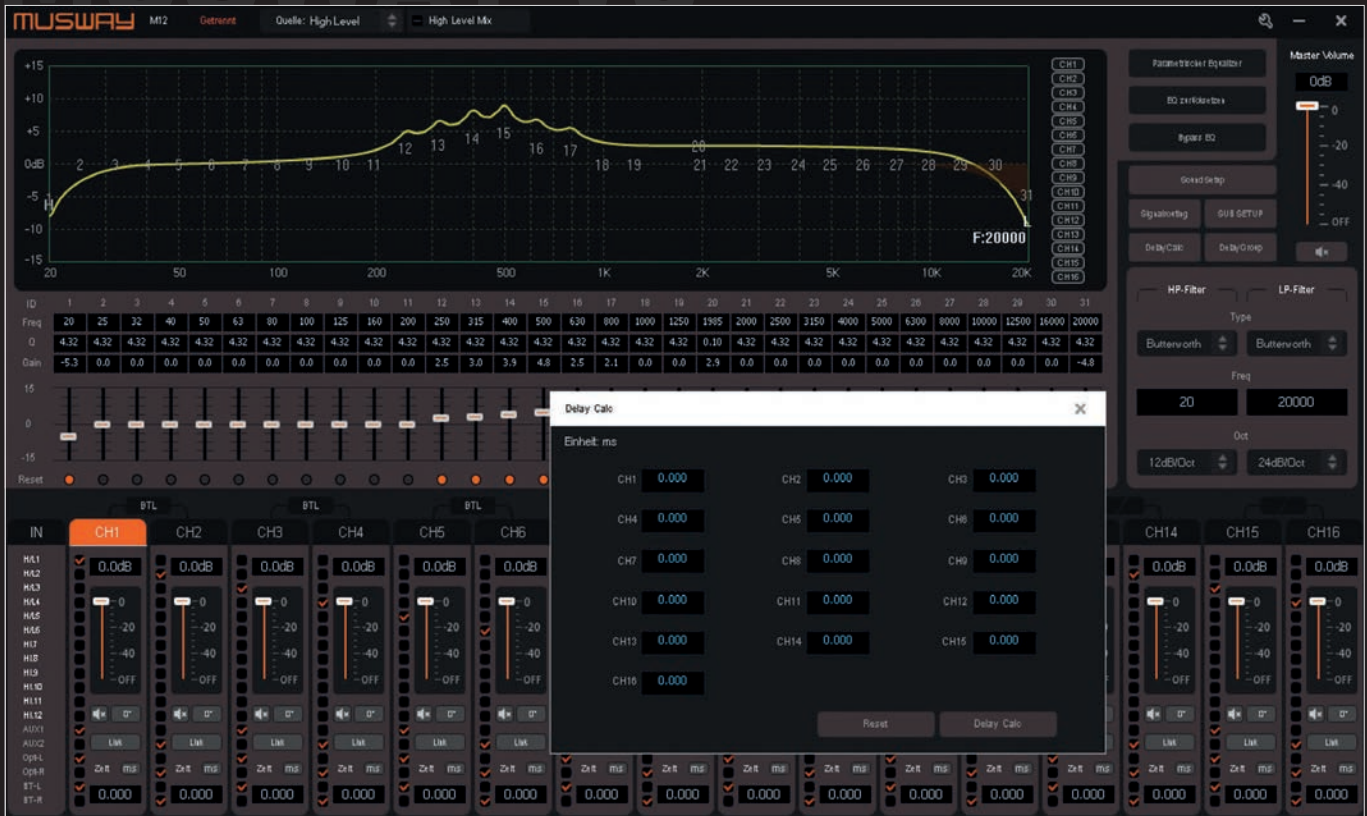
The brand new MUSWAY App "Tunest" is compatible with all newest generation DSP products as soon as a BTA2 USB Bluetooth dongle is connected. It can be operated with all smartphones and tablets with iOS or Android operating systems via Bluetooth and controls the integrated DSP in real time.

"Tunest" is even clearer and more intuitive to use than the previous App and now offers automatic detection of the connected hardware, a group runtime correction, filters from 6db to 48db slope rates, group selectable in 6db increments and the ability to adjust the sensitivity of the automatic switch-on function. In addition, it is now possible to receive and send MUSWAY presets via WhatsApp.

The App can be downloaded free of charge from the Google Play Store and the iOS App Store.



MUSWAY V3



Also brand new is the MUSWAY "V3" software for PC (newer than Windows XP) and compatible with all DSP products of the newest generation of the connected hardware, a group delay correction, filters down to a 6 dB slope and the option to adjust the sensitivity of the auto turn-on function. The software can be downloaded free of charge from www.musway.com/download

MUSIC IS THE WAY

DSP AMPLIFIERS

M10



NEW
COMING
SOON

M10

10-CHANNEL CLASS D AMPLIFIER
WITH 14-CHANNEL DSP · 1820W RMS



M12



M12

12-CHANNEL CLASS D AMPLIFIER
WITH 16-CHANNEL DSP · 1440W RMS



MUSWAY

DSP AMPLIFIERS



EPS technology which prevents when connected to an OEM factory radio that no functions are impaired or error messages are written into the vehicle memory.



4-fold laminated board effectively suppresses EMC interference due to the favorable topology



Optional Accessories:



DRC1



BTSHD



BTS



BTA2

TECHNICAL SPECIFICATIONS		M12	M10
Power Output(RMS) @14.4 VDC	@ 4 Ω	85W	CH 1-8: 75 W CH 9-10: 145 W
	@ 2 Ω	120W	CH 1-8: 110 W CH 9-10: 180 W
	Bridged @ 4 Ω	240W	CH 1-8: 330 W CH 9-10: 500 W
Input	High level	12	10
	Low level	6	6
	AUX	1	1
	Optical(192kHz / 24 bit)	1	1
DSP Channels		16CH	14CH
Audio Processor		Analogue Devices ADAU1466	Analogue Devices ADAU1466
Signal converters		A/D: BurrBrown D/A: Burrbrown	A/D: BurrBrown D/A: Burrbrown
input sensitivity	High-Level	CH1-8:8-24 V/RMS CH9-12:8-32 V/RMS	Ch1-8:8-24 V/RMS CH9-10:8-32 V/RMS
	Low-Level	2-8 V/RMS	2-6 V/RMS
	AUX	1-8 V/RMS	1-8 V/RMS
S/N Ratio A weighted @ 1W		≥95dB	≥95dB
Frequency Response-3dB		10 Hz-22 kHz	10 Hz-22 kHz
THD 90% Rated Power 1 kHz 4 Ω		≤0.5%	≤0.5%
Dimensions Width		13.38 inch	11 inch
Dimensions Depth		6.75 inch	6.5 inch
Dimensions Height		1.88 inch	1.79 inch

DSP AMPLIFIERS

M6



M6

6-CHANNEL CLASS D AMPLIFIER WITH
8-CHANNEL DSP · 630 WATTS RMS



M4+

M4+

4 CHANNEL CLASS D AMPLIFIER WITH
8-CHANNEL DSP · 540 WATTS RMS



DSP AMPLIFIERS



EPS technology which prevents when connected to an OEM factory radio that no functions are impaired or error messages are written into the vehicle memory.



4-fold laminated board effectively suppresses EMC interference due to the favorable topology



Optional Accessories:



DRC1



BTSHD



BTS



BTA2

TECHNICAL SPECIFICATIONS		M6	M4+
Power Output(RMS) @14.4 VDC	@ 4 Ω	6x70W	4x105W
	@ 2 Ω	6x80W	4x135W
	Bridged @ 4 Ω	3x240W	2x270W
Input	High level	6	4
	Low level	6 <small>(* By changing the jumper position on PCB)</small>	4 <small>(* By changing the jumperposition on PCB)</small>
	AUX	1	1
	Optical(192kHz / 24 bit)	1	1
DSP Channels		8CH	8CH
Audio Processor		Analog Devices ADAU1452	Analog Devices ADAU1452
Signal converters		A/D: BurrBrown D/A: Burrbrown	A/D: BurrBrown D/A: Burrbrown
input sensitivity	High-Level	10 - 20 V/RMS	10 - 30 V/RMS
	Low-Level	2-6 V/RMS	2-6 V/RMS
	AUX	2-6 V/RMS	2-6 V/RMS
S/N Ratio A weighted @ 1W		≥90dB	≥90dB
Frequency Response-3dB		10 Hz-22 kHz	10 Hz-22 kHz
THD 90% Rated Power 1 kHz, 4 Ω		≤0.5%	≤0.1%
Dimensions Width		7.87 inch	8.66 inch
Dimensions Depth		5.9 inch	5.9 inch
Dimensions Height		1.73 inch	1.73 inch

DSP AMPLIFIERS

D8



D8

8-CHANNEL CLASS D AMPLIFIER WITH
10-CHANNEL DSP · 600 WATTS RMS



D1S



D1S

4-CHANNEL CLASS AB AMPLIFIER WITH
6-CHANNEL DSP · 100 WATTS RMS



DSP AMPLIFIERS



EPS technology which prevents when connected to an OEM factory radio that no functions are impaired or error messages are written into the vehicle memory.



4-fold laminated board effectively suppresses EMC interference due to the favorable topology



Optional Accessories:



TECHNICAL SPECIFICATIONS		D8	D1S
Power Output(RMS) @14.4 VDC	@ 4 Ω	8x65W	4x25W
	@ 2 Ω	8x90W	-
	Bridged @ 4 Ω	4x360W	-
Input	High level	8	4
	Low level	-	-
	AUX	1	1
	Optical(192kHz / 24 bit)	1	-
DSP Channels		10CH	6CH
Audio Processor		Analog Devices ADAU1452	Analog Devices ADAU1701
Signal converters		A/D: BurrBrown D/A: Burrbrown	A/D: BurrBrown D/A: Burrbrown
input sensitivity	High-Level	10 or 18 V/RMS	14 V/RMS
	Low-Level	-	-
	AUX	4 V/RMS	4 V/RMS
S/N Ratio A weighted @ 1W		≥90dB	≥90dB
Frequency Response-3dB		10 Hz 22 kHz	10 Hz-22 kHz
THD 90% Rated Power 1 kHz, 4 Ω		≤0.5%	≤0.02%
Dimensions Width		8.07 inch	6.49 inch
Dimensions Depth		5 inch	3.85 inch
Dimensions Height		1.48 inch	1.30 inch

PROCESSORS



DSP68

8-CHANNEL DSP WITH PC / APP CONTROL



TUNE12

12-CHANNEL DSP WITH PC / APP CONTROL

“ The TUNE12 not only has optical, coaxial and AUX inputs, but also allows you to connect Low Level inputs AND High Level inputs to it. In other words, The Low Level inputs in TUNE12 is an independent input source, offers you more flexibility to connect multiple source. ”



PROCESSORS



EPS technology which prevents when connected to an OEM factory radio that no functions are impaired or error messages are written into the vehicle memory.



4-fold laminated board effectively suppresses EMC interference due to the favorable topology



Optional Accessories:



DRC1



BTSHD



BTS



BTA2

TECHNICAL SPECIFICATIONS		DSP68	TUNE12
Input	High level	6	8
	Low level	6	6
	AUX	1	1
	Optical(96kHz / 24 bit)	1	1
	Coaxial(96kHz / 24 bit)	-	1
DSP Channels		8CH	12CH
Audio Processor		Analog Devices ADAU1452	Analog Devices ADAU1452
Signal converters		A/D: BurrBrown D/A: Burrbrown	A/D: BurrBrown D/A: Burrbrown
input sensitivity	High-Level	Ch1-4:3-21 V/RMS CH5-6:3-21 V/RMS	8-24 V/RMS
	Low-Level	1-5 V/RMS	1-8 V/RMS
	AUX	1-5 V/RMS	1-8 V/RMS
Output Voltage		6.5 V/RMS	6.5 V/RMS
Dimensions Width		7.12 inch	8.66 inch
Dimensions Depth		4.88 inch	5.9 inch
Dimensions Height		1.61 inch	1.73 inch

ACCESSORIES



BTA2

USB Bluetooth Dongle for Audio Streaming & App Control

In addition to the audio streaming function, the BTA2 dongle offers the option of configuring and controlling the DSP device via smartphone or tablet. Compatible with all MUSWAY DSP products.

BTSHD

USB Bluetooth Dongle for HD Audio Streaming

The HD audio streaming function of the BTS-HD dongle enables wireless audio streaming from Android device to the DSP in high-resolution brilliance, support aptX, aptX HD, LDAC, AAC. With an impressive 24-bit sampling depth and 192 kHz sampling rate, the dongle with aptX HD codec even meets higher standards than conventional Hi-Res Audio CDs. Compatible with all MUSWAY DSP products.



BTS

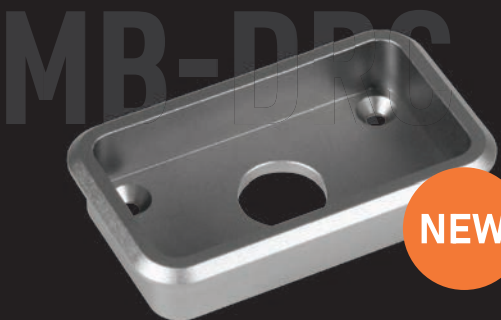
USB Bluetooth dongle for audio streaming

The BTS dongle offers an audio streaming function that allows you to wirelessly stream music from your mobile device to the DSP device. Compatible with all MUSWAY DSP products.

DCR1

Digital Remote Controller with OLED Display

With the DRC1 remote controller it is possible to regulate the master volume and the subwoofer volume on the DSP device. In addition, the input signal, and the stored DSP preset can be selected. It is also possible to mute the entire sound system by briefly pressing the rotary knob. Thanks to the OLED display, the DRC1 is easy to operate and only needs to be connected to the amplifier or processor with the included 5 meter connection cable. Compatible with all MUSWAY DSP products.



MB-DRC

Mounting bracket for Musway DRC1.

(DRC-1 not included) Fixes your Musway DRC1 securely and firmly in the housing with a small magnet.

MX CLASS D
AMPLIFIERS

P2

2-CHANNEL CLASS D MINI AMPLIFIER

P2 seamlessly intergrates with MUSWAY DSP Amps and processors, enhancing audio clarity and precision.



Specifications |

Power output(RMS) @ 14.4 VDC, 1% THD:
2x80W@4 Ω
2 x100W @ 2 Ω
2 x AUX/RCA Input,
2 x Loudspeaker Output amplified
Dimensions: 4.84 x 1.41 x 2.95 inch



Compared with
iPhone 14 size



FIVE100

5-CHANNEL CLASS D AMPLIFIER

Specifications |

Power output(RMS) @ 14.4 VDC:
4 x 130 W +1 x 280 W @ 4 Ohms
4 x 215 W +1 x 470 W @ 2 Ohms
2 x 500 W @ 4 Ohm bridged (CH1-4)
1 x 680 W @ 1 Ohm (CH5)
Highpass Filter 50 - 5000 Hz (CH1/2)
Highpass Filter 10 - 500 Hz (CH3/4)
Lowpass Filter 50 - 5000 Hz (CH3/4)
Bandpass Function (CH3/4)
Subsonic Filter 10 - 40 Hz(CH5)
Lowpass Filter 40 - 150 Hz(CH5)
Phase Shift 0 - 180°(CH5)
Bass Boost 0 - 18 dB (CH5)
Input Mode Switch CH1/2 or CH1-4
RCA Inputs
High Level Inputs with EPS
Auto Turn On Function (DC Offset or Signal Sense selectable)
Bass Remote Controller
Dimensions: 11.61 x 1.77 x 5.90 inch

FIVE100



NEW
COMING
SOON

MX CLASS D
AMPLIFIERS

EIGHT100



EIGHT100

8-CH Class D Amplifier · 1440 Watts RMS



SIX100



SIX100

6-CH Class D Amplifier · 1080 Watts RMS



“ With the title “Most powerful 8-channel power amplifier in the world”, the noble MUSWAY EIGHT100 makes a furious start in Car & Hifi 1/2022. ”

ALL CHANNELS BRIDGEABLE Every channel pair can be bridged. Bridging amplifier channels to more than double the power.

IFT 4-fold laminated board effectively suppresses EMC interference due to the favorable topology

EPS EPS technology which prevents when connected to an OEM factory radio that no functions are impaired or error messages are written into the vehicle memory.

**ULTRA COMPACT
HIGH POWER**

**HIGH
EFFICIENCY
UP TO 84%**

**START
STOP
ready**

AUTO TURN-ON



All amplifiers includes compact bass Level remote controller

FOUR100



FOUR100

4-CH Class D Amplifier 800 Watts RMS

TWO100



TWO100



TECHNICAL SPECIFICATIONS		EIGHT100	SIX100	FOUR100	TWO100
Power Output(RMS) @14.4 VDC	@ 4 Ω	8x110W	6x120W	4x130W	2x140W
	@ 2 Ω	8x195W	6x200W	4x220W	2x250W
	@ 4 Ω bridged	4x390W	3x395W	2x435W	1x480W
Filters	High-pass	50-5000 Hz (CH1/2&CH5/6) 10- 500 Hz (CH3/4 & CH7/8)	50-5000 Hz(CH1/2) 10- 500 Hz (CH3/4 & CH5/6)	50-5000 Hz(CH1/2) 10- 500 Hz(CH3/4)	50-250 Hz
	Low-pass	50-5000 Hz (CH3/4&CH7/8)	50-5000 Hz (CH3/4 & CH5/6)	50-5000 Hz (CH3/4)	50-250 Hz
	Band-pass	CH3/4&CH7/8	CH3/4 & CH5/6	CH3/4	CH1/2
	Bass Boost	-	0-12 dB(CH5/6)	0-12 dB(CH3/4)	0-12 dB @ 45Hz
Damping factor 1kHz @ 4Ω		>150	>150	>300	>200
S/N Ratio A weighted @1W		107dB	107dB	107dB	>95dB
THD 1kHz @ 4Ω		<0.02%	<0.02%	<0.02%	<0.04%
Dimensions Width		12.59 inch	11.41 inch	8.66 inch	3.93 inch
Dimensions Depth		5.90 inch	5.90 inch	5.90 inch	5.90 inch
Dimensions Height		1.77 inch	1.77 inch	1.77 inch	1.77 inch

MX CLASS D
AMPLIFIERS

ONE2000

**NEW
COMING
SOON**



ONE2000

Mono Class D Amplifier · 2040 Watts RMS

ONE1000

ONE1000

Mono Class D Amplifier · 1050 Watts RMS



ONE600



ONE600

Mono Class D Amplifier · 650 Watts RMS



All amplifiers includes compact bass Level remote controller



Easily driving any array of woofers wired to a 1-ohm load



4-fold laminated board effectively suppresses EMC interference due to the favorable topology



EPS technology which prevents when connected to an OEM factory radio that no functions are impaired or error messages are written into the vehicle memory.



Pure amplification function allows you to fine tune the sound via DSP



TECHNICAL SPECIFICATIONS		ONE2000	ONE1000	ONE600
Power Output(RMS) @14.4 VDC	@ 4 Ω	1x925W	1x435W	1x250W
	@ 2 Ω	1x1500W	1x710W	1x400W
	@ 1 Ω	1x2040W	1x1145W	1x650W
Filters	Subsonic	10-40 Hz	10-40 Hz	10-40 Hz
	Low-pass	40-150 Hz	40-150 Hz	40-150 Hz
	Bass Boost	0-18 dB	0-18 dB	0-18 dB
Damping factor 1kHz @ 4Ω		>200	>150	>150
S/N Ratio A weighted @1W		104dB	107dB	107dB
THD 1kHz @ 4Ω		0.031%	<0.02%	<0.02%
Dimensions Width		12.59 inch	9.44 inch	7.87 inch
Dimensions Depth		6.30 inch	5.90 inch	5.90 inch
Dimensions Height		1.97 inch	1.77 inch	1.97 inch

MG SPEAKERS



MG 6.3A

3-WAY ACTIVE COMPONENT SYSTEM

Complete set with MG6.2W, MG3M, MG6.2T

MG 6.2A

2-WAY ACTIVE COMPONENT SYSTEM

Complete set with MG6.2W, MG6.2T

MG 6.2W

16,5 CM (6.5) KICKBASS SPEAKERS

125 Watts/RMS, 250 Watts/MAX, 4Ω

Mounting Depth 67 mm, Mounting Hole 5.62 inch

MG 6.2T

26 MM SILK DOME NEODYMIUM TWEETERS

125 Watts/RMS, 250 Watts/MAX, 4Ω

Mounting Depth 19,5 mm, Mounting Hole 1.73 inch

MG 3M

7,5 CM (3") MID SPEAKERS

60 Watts/RMS, 120 Watts/MAX, 4Ω

Mounting Depth 39 mm, Mounting Hole 2.87 inch



MC SPEAKERS



MC62

6.5" 2-WAY COAXIAL SPEAKERS

Power Rating RMS 100 Watts
Power Rating max. 200 Watts
Mounting Depth 2.36 inch
Impedance 4 Ohms
Frequency Range 65-20000 Hz
Mounting Diameter 144 Ømm
Woofer Polypropylene Cone
Tweeter Silk Diaphragm Dome

MC6.2C

6.5" MIDBASS SPEAKERS

Power Rating RMS 100 Watts
Power Rating max. 200 Watts
Impedance 4 Ohms
Frequency Range 65-20000 Hz
Voice coil 1 inch
Polypropylene Cone
Mounting Depth 60 mm
Mounting Diameter 5.67 inch

1" TWEETERS

Power Rating RMS 100 Watts
Power Rating max. 200 Watts
Impedance 4 Ohms
Frequency Range 1500-20000 Hz
Silk Diaphragm Dome
Mounting Depth 0.98 inch
Mounting Diameter Ø1.81 inch



**MC Series Speakers to Expand in 2024 with New Models:
Featuring 2.75", 4", 5.25", and 6" x 9" Speakers.**

CSB SPEAKERS FOR BMW



CSB4.2C

CSB4.2C

4" 2 WAY COMPONENT SYSTEM
60 Watts/RMS, 120 Watts/MAX, 4 Ω
3.93" Midrange Speaker (Pair)
0.98" Midrange Speaker (Pair)

CSB42X

4" 2-WAY COAXIAL SPEAKERS
60 Watts/RMS, 120 Watts/MAX, 4 Ω
10 cm Midrange Speaker
0.78" Titanium Tweeter

SUITABLE FOR E/F/G MODELS

except CSB42X and CSB4.2C at F15/F16, front doors.
Compatibility depending on model and features.



CSB8W

CSB8W

8" SUBWOOFER (PAIR)
180 Watts/RMS, 300 Watts/MAX, 2Ω
2" Voice Coil



CSM SPEAKERS FOR MERCEDES-BENZ



NEW

CSM206X

4" 2-Way Coaxial-speakers
60 Watts/ RMS, 120 Watts/MAX
Impedance 4 Ohms
Frequency Response 75 - 22000 Hz
4" Woofer, Glass Fiber Conde
Dual Neodymium Magnet
16 mm Silk Dome Neodymium Tweeters
Mounting Depth 1.38 inch
Mounting Diameter 3.86 inch
Plug+Play Connections

CSM206C

4" 2-Way Coaxial-speakers
60 Watts/ RMS, 120 Watts/MAX
Impedance 4 Ohms
Frequency Response 75 - 24000 Hz
4" Woofer, Glass Fiber Conde
Dual Neodymium Magnet
25 mm Silk Dome Neodymium Tweeters
Mounting Depth 1.26 inch
Mounting Diameter 3.86 inch
Plug+Play Connections



NEW



NEW

CSM206W

8" Subwoofer
120 Watts/ RMS, 200 Watts/MAX
Impedance 2 Ohms
Frequency Response 30 - 300 Hz
Dual Neodymium Magnet
1.41" Voice Coil
Carbon Sandwich Cone
Conex Spider

ACTIVE SUBWOOFER



SWA7

ACTIVE UNDERSEAT-SUBWOOFER-SYSTEM WITH 17CM (6.5") SUBWOOFER

Integrated Class A/B amplifier
 1 x 80 Watts RMS, 1 x 600 Watts MAX
 LP Crossover 50-150 Hz
 Bass Boost 0-12dB @ 45 Hz
 Subsonicfilter 20 Hz fixed
 Phase Switch 0/180°, RCA Inputs
 Auto Turn-On, High Level Inputs
 Bass Remote Controller
 Dimensions: 7.87" x 2.91" x 10.71"

SUBWOOFER

MWS1022

25 CM (10") FLAT DESIGN SUBWOOFER

300 Watts RMS, 600 Watts max.
 Impedance 2 + 2 Ohms
 50 mm (2") Voice Coil
 Sturdy Steel Basket
 1,27 kg (45 oz.) Magnet
 Fs 32,6 Hz • Qts 0,75 • VAS 31,2 L
 SPL 83 dB, Xmax +/- 15 mm
 Installation Depth 3.42"
 Installation Opening 9.13"



MWS822

20 CM (8") FLAT DESIGN SUBWOOFER

250 Watts RMS, 500 Watts max.
 Impedance 2 + 2 Ohms
 50 mm (2") Voice Coil
 Sturdy Steel Basket
 1,13 kg (40 oz.) Magnet
 Fs 39,7 Hz • Qts 0,575 • VAS 10,9 L
 SPL 83 dB, Xmax +/- 15 mm
 Installation Depth 3.07"
 Installation Opening 7.16"

MW622

6.5" 150W RMS SUBWOOFER INCLUDING CONNECTION CABLES

150 Watts RMS (300 Watts Peak Power Handling)
 Impedance 2 + 2 Ohms
 38 mm (1,5") Voice Coil
 Sturdy Steel Basket
 0.78 kg (25 oz.) Magnet
 Fs 51,3 Hz • Qts 0,45 • VAS 8,2 L
 SPL 85 dB
 Xmax +/- 10 mm
 Inkl. 2 x 1 Meter Connection Cables Ø 2,5 mm²
 Installation Depth 3.34 in
 Installation Diameter 5.66 in



MG SERIES
SUBWOOFER

MG12

12" (30 CM) SUBWOOFER INCL. PROTECTION GRILLE

■ **Specifications |**

700 Watts RMS, 1400 Watts Max.
Impedance 2 + 2 Ohms
76 mm (3") Voice Coil
Sturdy Aluminum Cast Basket
Pre-assembled Protection Grille
2 x 1,7 kg (60 oz.) Magnet
Fs 30 Hz • Qts 0,4 • VAS 64 L
SPL 91 dB/2,38V/1m, Xmax +/- 22 mm
Installation Depth 7.12 inch
Installation Diameter 11.22 inch



MG10

10" (25 CM) SUBWOOFER INCL. PROTECTION GRILLE

■ **Specifications |**

500 Watts RMS, 1000 Watts max.
Impedance 2 + 2 Ohms
62 mm (2.4") Voice Coil
Sturdy Aluminum Cast Basket
Pre-assembled Protection Grille
2 x 1,4 kg (50 oz.) Magnet
Fs 32 Hz • Qts 0,49 • VAS 31,5 L
SPL 88 dB/2,38V/1m • Xmax +/- 20 mm
Installation Depth 6.37 inch
Installation Diameter 9.44 inch

MG8

8" (20 CM) SUBWOOFER INCL. PROTECTION GRILLE

■ **Specifications |**

300 Watt RMS, 600 Watt max.
Impedance 2 + 2 Ohms
50 mm (2") Voice Coil
Sturdy Aluminum Cast Basket
Pre-assembled Protection Grille
2 x 1,4 kg (50 oz.) Magnet
Fs 46 Hz • Qts 0,44 • VAS 9,5 L
SPL 88 dB/2,38V/1m • Xmax +/- 19 mm
Installation Depth 5.43 inch
Installation Diameter 7.28 inch





MUSWAY

MUSIC IS THE WAY



26820 Hobie Cir. Suite A-1
Murrieta, CA 92562 USA



+1 951-816-6307



sales@globalaudiomarketing.com

www.muswayusa.com